

Mapping Everglades Ecosystems

color key

Marine and Estuarine
(seagrass, hardbottom, corals)

Coastal
Marsh

Mangrove

Cypress

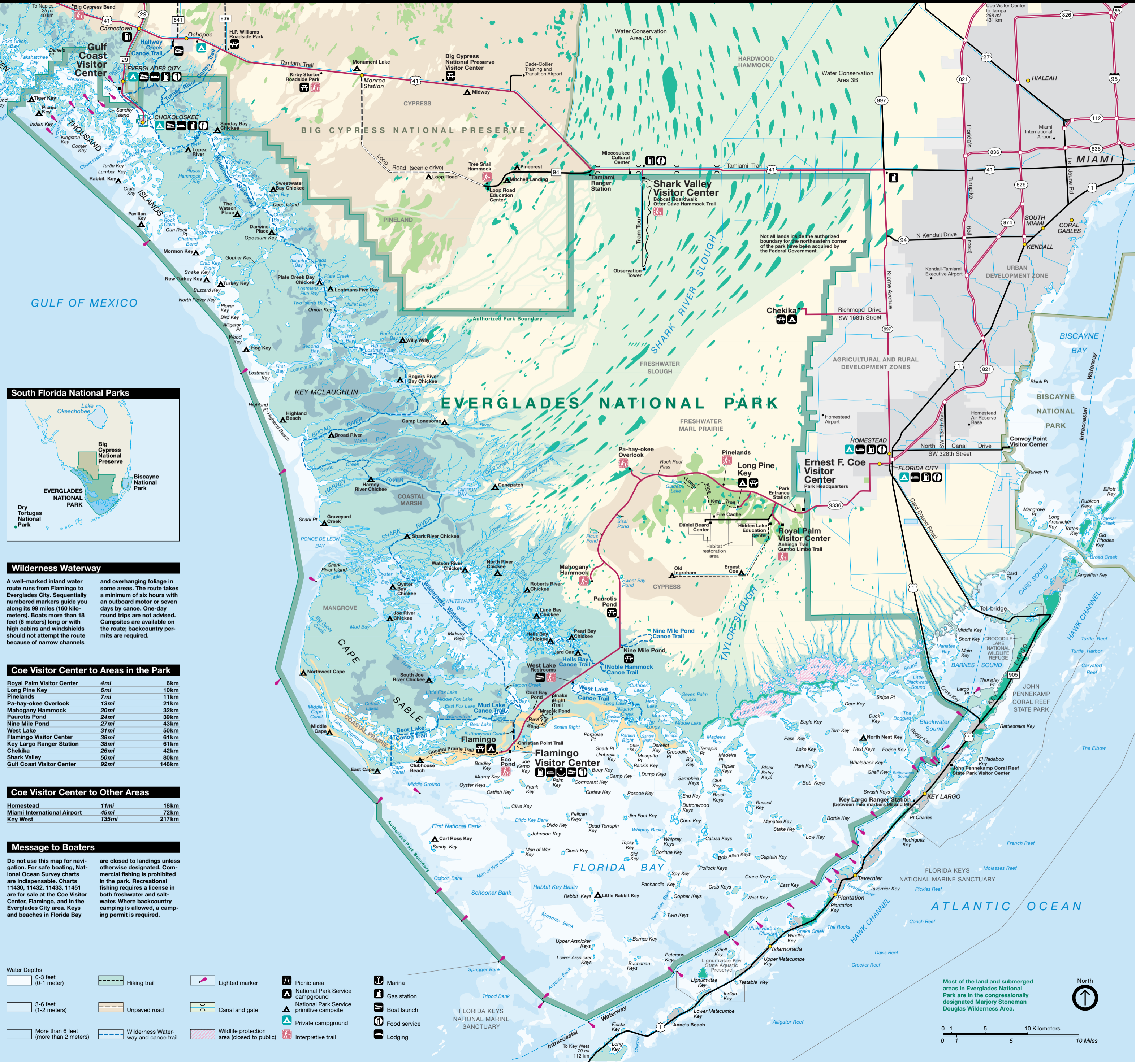
Coastal
Prairie

Freshwater
Slough

Pineland

Freshwater
Marl Prairie

Hammock



Wilderness Waterway

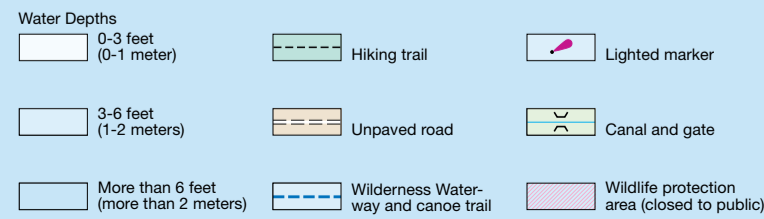
A well-marked inland water route runs from Flamingo to Everglades City. Sequentially numbered markers guide you along its 99 miles (160 kilometers). Boats more than 18 feet (6 meters) long or with high cabins and windshields should not attempt the route because of narrow channels and overhanging foliage in some areas. The route takes a minimum of six hours with an outboard motor or seven days by canoe. One-day round trips are not advised. Campsites are available on the route; backcountry permits are required.

Coe Visitor Center to Areas in the Park		
Royal Palm Visitor Center	4mi	6km
Long Pine Key	6mi	10km
Pinelands	7mi	11km
Pa-hay-okee Overlook	13mi	21km
Mahogany Hammock	20mi	32km
Paurotis Pond	24mi	39km
Nine Mile Pond	27mi	43km
West Lake	31mi	50km
Flamingo Visitor Center	38mi	61km
Key Largo Ranger Station	38mi	61km
Chekika	26mi	42km
Shark Valley	50mi	80km
Gulf Coast Visitor Center	92mi	148km

Coe Visitor Center to Other Areas		
Homestead	11mi	18km
Miami International Airport	45mi	72km
Key West	135mi	217km

Message to Boaters

Do not use this map for navigation. For safe boating, National Ocean Survey charts are indispensable. Charts 11430, 11432, 11433, 11451 are for sale at the Coe Visitor Center, Flamingo, and in the Everglades City area. Keys and beaches in Florida Bay are closed to landings unless otherwise designated. Commercial fishing is prohibited in the park. Recreational fishing requires a license in both freshwater and saltwater. Where backcountry camping is allowed, a camping permit is required.



Most of the land and submerged areas in Everglades National Park are in the congressionally designated Marjory Stoneman Douglas Wilderness Area.

